



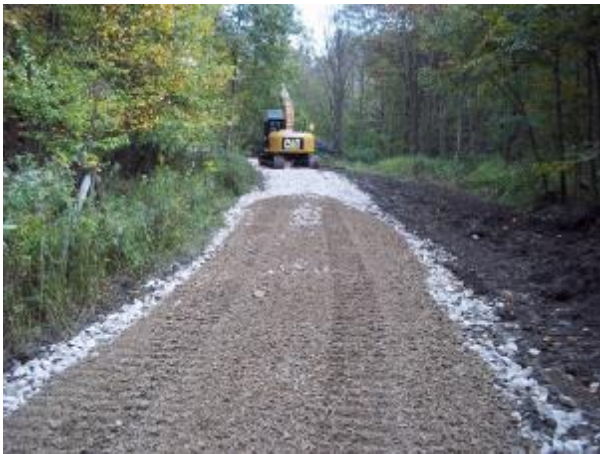
BERNIER CONSTRUCTION, INCORPORATED PROJECT SUMMARY

Project Title: Access Road and Permanent Rock Ford Crossing

Location: Saltlick Township, Fayette County, PA.

Scope: Provide labor, materials, and equipment for the construction of an Access Road and Permanent Rock Ford Crossing

Berner Construction was awarded a contract from the Mountain Watershed Association, for the construction of an Access Road and Permanent Rock Ford Crossing for an unnamed tributary to Newmeyer Run, Saltlick Township, Fayette County, PA. The project included minimal clearing and grading, construction of 2,045 feet of access road, and 80 feet of a permanent stream crossing. The access road included the furnish and placement of 590 tons of AASHTO #1, 515 tons of 2A modified stone and 3,000 square yards (sy) of geotextile. The permanent stream crossing included the furnish and placement of 36 tons of AASHTO #1, 18 tons of 2A modified stone and 110 tons of R-6 Rock. The site restoration included installing a 14 foot wide by 5 ft tall galvanized steel construction farm-style gate.



Access Road



Rock Ford Crossing